

## Premium Preparation 1600 mm Worktop Cupboard with Upstand

ITEM # \_\_\_\_\_

MODEL # \_\_\_\_\_

NAME # \_\_\_\_\_

SIS # \_\_\_\_\_

AIA # \_\_\_\_\_


**133082 (TN1610EN)**

 WorkTop Cupboard, with  
100mm upstand, 1 shelf and  
2 sliding doors, (6 feet),  
1600mm

### Short Form Specification

**Item No.** \_\_\_\_\_

The 50mm high worktop in 304 AISI stainless steel, 1,5mm in thickness, is sound-deadened and has anti-drip edges and welded corners. Inner welded frame in stainless steel. Under-top reinforcement in 304 AISI s/s. Integral rear upstand, h=100mm, with 10mm radius. Intermediate reinforced shelf in 304 AISI s/s that can be positioned at three different heights. Base shelf in 304 AISI s/s, 1mm in thickness, reinforced by 1,5mm support bars in AISI 304 s/s. Two sound-deadened sliding doors in 304 AISI s/s. Welded construction for maximum strength. Six 2"-feet in 304 AISI stainless steel, h=200mm, adjustable in height (-50+20mm).

### Main Features

- Worktop cupboard can be mounted on 125 mm diameter castors (2 with brakes) using the optional accessory kit.
- Handles in stainless steel for better hygiene and reliability.
- Sturdiness, stability and reliability of table accurately tested.

### Construction

- Inner welded frame in stainless steel to guarantee superior strength and stability.
- Base panel has 40mm high profile, is 8/10 in thickness with upturned edges and bar reinforcement. It is welded to legs for further structure reinforcement.
- Base panel in AISI 304 stainless steel, 10/10 in thickness reinforced by 15/10 support bars in AISI 304.
- 100 mm upstand with 10 mm radiused corner and 13 mm deep, designed to be used against a wall.
- Intermediate shelf in stainless steel with riveted corners and trasversal reinforcement in stainless steel.
- Upstand back completely covered with Stainless Steel welded profile.
- Heavy duty construction entirely in AISI 304 stainless steel to offer maximum durability.
- 304 AISI stainless steel feet, 150 mm high and 54 mm in diameter, adjustable by -35/+25 mm.

### Optional Accessories

- Wheel kit for cupboards, 4 wheels (2 with brakes), D=1000 mm PNC 855299 □

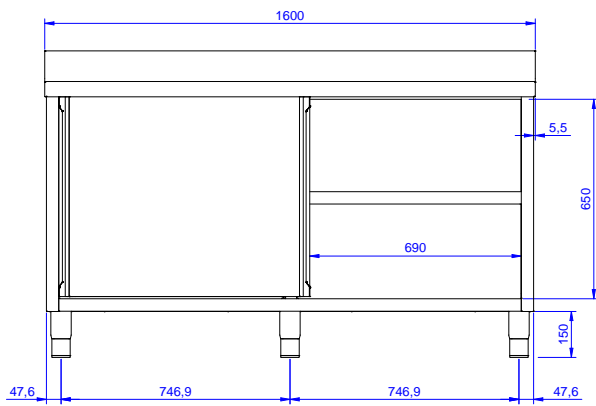
**APPROVAL:** \_\_\_\_\_



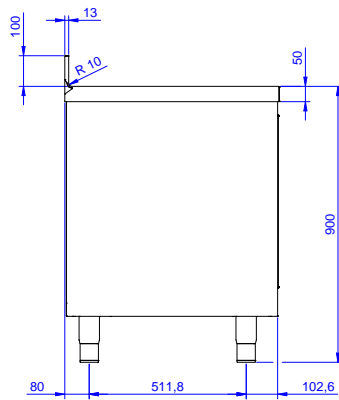
**Electrolux**  
PROFESSIONAL

## Premium Preparation 1600 mm Worktop Cupboard with Upstand

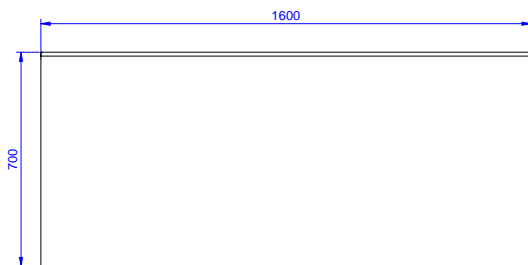
Front



Side



Top



Premium Preparation  
1600 mm Worktop Cupboard with Upstand

The company reserves the right to make modifications to the products  
without prior notice. All information correct at time of printing.

2025.05.15

**Key Information:**

|                                 |           |
|---------------------------------|-----------|
| Cabinet width:                  |           |
| 133082 (TN1610EN)               | 1545 mm   |
| Cabinet depth:                  | 645 mm    |
| Cabinet height:                 | 610 mm    |
| External dimensions,<br>Width:  | 1600 mm   |
| External dimensions,<br>Depth:  | 700 mm    |
| External dimensions,<br>Height: | 1000 mm   |
| Upstand Dimensions,<br>Height:  | 100 mm    |
| Upstand Dimensions,<br>Depth:   | 13 mm     |
| Upstand Dimensions,<br>Radius:  | R=10      |
| Number and type of doors:       | 2 Sliding |
| Worktop thickness:              | 50 mm     |
| Net weight:                     | 65 kg     |